

Mayoral Combined Authority Board

31 July 2023

Getting Building Fund Delivery

Is the paper exempt from the press and public?	No
Reason why exempt:	Not applicable
Purpose of this report:	Monitoring/Assurance
Is this a Key Decision?	No
Has it been included on the Forward Plan?	Not a Key Decision

Director Approving Submission of the Report:

Gareth Sutton, Executive Director Resources & Investment/s73 Officer

Report Author(s):

Sue Sykes- Assistant Director, Funding Monitoring & Reporting
Sue.sykes@southyorkshire-ca.gov.uk

Executive Summary

This report provides an update on the delivery and progress of the Getting Building Fund.

What does this mean for businesses, people and places in South Yorkshire?

This report showcases the projects funded by the Getting Building Fund resource and how they support the MCA's aspirations.

Recommendations

That Board note the progress and impacts within South Yorkshire communities, as a result of the investment of the Getting Building Fund.

Consideration by any other Board, Committee, Assurance or Advisory Panel

None

1. Background

- 1.1 In June 2020, the Government launched 'A New Deal for Britain' which was a key part of the fiscal stimulus package designed to keep the country working during the pandemic.

As part of this strategy £33.6m of Getting Building Funding resource was awarded to the MCA for "shovel ready" infrastructure schemes which were able to have an immediate impact in priming investment in local areas.

GBF funding has been used dynamically to complement other funding resources received by the individual local authority partners and the MCA. Being used alongside Future High Street Fund, Towns Deal, Brownfield Housing, Transforming Cities Fund, and Gainshare monies, the MCA and partners have been able to deliver transformative schemes at pace that kept the construction industry working and will provide a lasting legacy for future generations.

1.2 Financial Progress

On submission of the final expenditure report into Government at the end of May 2023 the MCA was able to declare that the full £33.6m has been defrayed.

Projects' current delivery is split into three categories:

- a) Fully spent and physically complete;
- b) Fully spent GBF but concluding additional works funded through other sources; and,
- c) Concluding GBF spend.

- 1.3 The report provides details on each project and outlines how schemes would be funded

Projects Fully Spent and Physically Complete

1.4 **Barnsley College** **Barnsley College Digital Innovation Hub – Phase 2** **GBF Investment - £1.4m**

The SciTech Digital Innovation Hub was officially opened in October 2021 by Nadhim Zahawi, Secretary of State for Education, and accommodates students studying a range of Digital Industries subjects including broadcast journalism, computing and IT, digital design, digital photography, film and TV and games design.

GBF funding contributed to new improved space and facilities. Facilities within the hub have a special focus on digital industries cyber security, network technologies, Artificial Intelligence and Virtual Reality alongside software and programming.



**1.5 Rotherham Metropolitan Borough Council
Century II Business Centre
GBF Investment - £3.6m**

GBF was used to support the build of [new office/light industrial units](#) in Rotherham which are due to open in September on conclusion of utility works. Some units incorporate laboratory specifications after working with Hallam University and Food Engineering specialists to identify potential gaps in provision.

Staff within Rotherham Investment & Development Office (RIDO) have received a high level of enquiries about available space and are optimistic about this addition to their Council owned managed workspace portfolio and how it will complement their public sector business support offer.



**1.6 DN Colleges Group
Digital Infrastructure
GBF Investment - £0.6m**

This project invested in accelerating the Colleges' digital strategy and completed delivery in March 2022. The funding was used to purchase and install IT equipment for students which partly enabled a move to distance/remote learning during the pandemic. The project is currently exceeding output forecasts with 73 new learners assisted in courses leading to a qualification and 22 apprentices created so far.

1.7 **DN Colleges Group**
Construction Space
GBF Investment - £1m

GBF resource was used for the refurbishment of a college site to create 1,283 m2 of flexible learning space for construction learning. This is enabling new methods of construction learning and helping to maximise learner achievements and employment potential. Around 300 new learners and 140 new apprentices have been created since the re-purposing.

1.8 **Barnsley Metropolitan Borough Council**
Barnsley Town Centre Public Realm
GBF Investment - £1.8m



Peel Square underwent high quality improvements as a key public realm space in Barnsley. This project was delivered in 21/22. The Square is now being used as an improved key [events](#) site. It is part of Barnsley's ongoing [success story](#) with the town reported as the sixth best in the UK regarding post COVID recovery in terms of footfall and spending.

1.9 **Barnsley Metropolitan Borough Council**
New Active Travel Foot/Cycle Bridge
GBF Investment - £1.5m

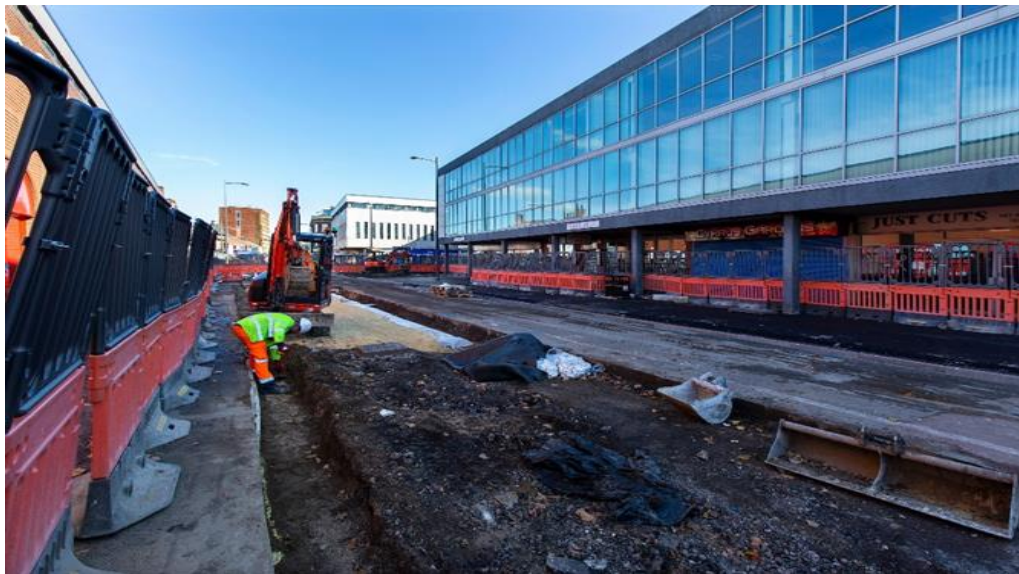
A new [Active Travel Footbridge](#) has opened in May 2023 which connects two green areas in Barnsley which were separated by the Barnsley Huddersfield train line. A short [video](#) shows installation of the bridge.

Sir Steve Houghton said the bridge had already led to a "massive improvement" in traffic for the town centre. "It's hugely improving the environment around the area, particularly the park for the kids and people, they absolutely love it," he added. "The green space has been improved and they've got the bridge which has made a huge difference in terms of connectivity from the side of the hospital over to Horizon school and the rest of the borough."



Projects fully spent for GBF, but concluding works with other funding

- 1.10 **City of Doncaster Council**
Doncaster Town Centre “Quality Streets” - Active Travel and Digital
Infrastructure Programme
GBF Investment - £5.5m



Quality Streets Phase 2 work

The project involves Active Travel links and public realm improvements in the city centre. The project spent all GBF funds by the end of March 2023. The project is in two phases with Phase 1 fully complete (paving, planting and landscape improvements to Duke Street and St Sepulchre Gate) and Phase 2 well underway end expected to complete in Winter 2023. Phase 2 improves Cleveland Street and Wood Street and includes cycle lanes connecting the train station with the Civic and Cultural Quarter and other public realm improvements.

- 1.11 **Barnsley Metropolitan Borough Council**
Market Gate Bridge
GBF Investment - £2m

The completion of the [Market Gate Bridge](#) scheme will conclude a key stage of the regeneration of Barnsley town centre. This scheme has been funded from a cocktail of resource, including the GBF allocation and devolution monies.

The bridge's striking design provides a much needed active travel link to the town centre which leads into the award winning [Glass Works](#) retail, leisure and public space. Work on the bridge is expected to conclude in Autumn this year.

Progress of the project can be seen in this video [here](#).



**1.12 Barnsley Metropolitan Borough Council
Goldthorpe Strategic Land Assembly
GBF Investment - £0.6m**

GBF provided funding for early preparatory costs for new roundabouts on the road between Darfield and Goldthorpe, which will open up plans for significant employment site (ES10 on [map](#)) to be built in the future.

This investment is supporting a £23.1m Towns Fund award for Goldthorpe which includes five major projects that cover employment, housing, community and leisure.

The MCA has also committed Brownfield Housing Fund monies to the wider project.

**1.13 Sheffield City Council
Sheffield Heart of the City Breathing Spaces
GBF Investment - £4m**



GBF funding has supported the development of a new park completed at the old fire station site in Sheffield city centre.

Funding was spent by March 2023 and the park was fully opened in May 2023. The new [public realm space](#) aims to complement the city centre offer and attract surrounding businesses to take up space in a previously neglected area of the city.

1.14 **Sheffield City Council**
Fargate Measures
GBF Investment - £6m

The project complements other MCA funding in Sheffield City Centre and £15.8m of Future High Streets Fund resource received from Government.

The project scope was broad and has evolved since the original business case submission. £6m grant was fully spent by May 2023 and incorporates early work for '[Event Central](#)' – a planned six storey hub for entertainment, events music, culture and arts. Full works is expected to start this Summer with a 12 month build period.

The project also involved additional costs for the GBF project 'Heart of the City', improvements at Balm Green Gardens, asbestos removal at John Lewis and some white boxing of empty units (preparing them to give maximum appeal for new tenants).



Projects not yet completed

1.15 **South Yorkshire Mayoral Combined Authority
South Yorkshire Region Wide Electric Vehicle Charging Points
Amount of GBF Investment - £1.8m**

£1.8m is invested in more than 160 new charging points through five contracts with the four local authorities and the MCA (previously SYPTE). Opening of the charge points started at the beginning of 2023 with the majority now fully completed.

Locations like the Wellgate car park in Rotherham and Market Gate in Barnsley will be operated by solar panels making it a 100% renewable energy source to power vehicles. Other locations like Meadowhall and Nunnery Square park and rides have been selected to encourage public transport use.

1.16 **Rotherham Metropolitan Borough Council
Greasbrough Corridor Improvements – “The Whins”
Amount of GBF Investment - £0.8m**

GBF resource is being used to deliver a road widening measure so that a right turn lane can be incorporated to alleviate traffic on a key route into Rotherham. The plan is to complete works in the School Summer holidays 2023.

2. Consultation on Proposal

2.1 Discussions on these projects continued with the thematic boards during project development.

Project sponsors are required to publish business cases on their websites (or an appropriate summary of the submission) and must consider all comments received and reflect this in the stages of the application process.

3. Timetable and Accountability for Implementing this Decision

3.1 The MCA entered into legal agreements with the promoters.

4. Financial and Procurement Implications and Advice

4.1 All projects presented were funded/part-funded from the Getting Building Fund.

5. Legal Implications and Advice

5.1 The legal implications of the projects were fully considered by a representative of the Monitoring Officer and included in the recommendations agreed within the relevant Assurance Summaries at the time of approval

6. Human Resources Implications and Advice

6.1 N/A

7. Equality and Diversity Implications and Advice

7.1 Equality and diversity implications are considered as part of the assurance of the project business cases.

8. Climate Change Implications and Advice

8.1 Climate change implications are considered as part of the assurance of the project application process.

8.2 Some of the projects detailed in this report include new and/or enhanced active travel initiatives thereby shifting private vehicle use to more sustainable modes of transport. This delivers health benefits and positively contributes to the SYMCA's climate change aspirations.

9. Information and Communication Technology Implications and Advice

9.1 N/A

10. Communications and Marketing Implications and Advice

10.1 The projects provide positive opportunities to highlight the difference the MCA investments are making to people, passengers, businesses, and places across South Yorkshire and how Members are taking action to support the region's recovery from COVID.

List of Appendices Included

None